

# STERLING

*House of total Solution*



## Table of Content

SL #	Content	Page #
1.	Introduction	4
2.	Current Activities	5
3.	Company Organogram	6
4.	Products Overview	7
5.	Our Products	8
6.0	Medical Equipment	8
6.1	Autoclave	
6.2	Medical Refrigerator	
6.3	Ultra sonogram	
6.4	Centrifuge	
6.5	DNA Test Device	
6.6	ECG Machine	
6.7	Incinerator	
6.8	Vaccine Carrier and Cold Box	
6.9	Hospital Bed	
6.10	Anaesthesia & Intensive care	
6.11	Mortuary	
6.12	Bio-Safety	
7.0	Forensic & Intelligent Equipments and System	17
7.1	Video Spectral Comparator (VSC)	
7.2	Mobile Tracking System	
7.3	Crime Scene	
8.0	IT Forensic:	19
8.1	e-Passport Reader (MRP/MRV reader),	
8.2	Large Comparison Microscopes	
8.3	AFIS - Automated Fingerprint Identification System	
8.4	ABIS - Automated Ballistic Identification System	
9.	Universal Testing Machine (UTM)	23
10.	High Temperature Chamber Furnaces	24
11.	Material Testing	25

SL #	Content	Page #
12.	Washing Plant	27
13.	Artificial Insemination (AI) Lab	28
14.	Microscope	28, 20
15.	Icelined Refrigerators	28
16.	Robotics and AI lab Software	29
17.	Industrial CNC Machine	30
18.0	Turn-Key Projects	31
18.1	Khulna Essential Latex Plant (KELP)	
18.2	Latex Plant	
18.3	Radar Tank Gauging System	
18.4	Modern Food Laboratory	
18.5	Water Treatment Plant	
19.	Power Generator	35
20.	Ambulance	36
21.	Laboratory Filtration	38
22.	Valued Customer	39
23.	Representations	40
24.	Service Department	42
25.	On Time Shipment	43
26.	Office: Sterling Multi-technologies Limited	44
27.	Company Information	45



## Introduction

Sterling Multi Technologies Ltd, established in 1995, Provides quality products and after sales services for industrial installations, environmental, medical, pharmaceutical, routine & research laboratory, educational, health and energy sector. It is involved in the design, procurement, construction and maintenance, operations in the areas of civil works for industrial infrastructures, the water resources business, and building advanced BSL III Lab. The company also engages in building offices, and research institutes and plant construction activities, including environmental plants, Condom and Gloves Machinery, Field Latex Processing Plant, chemical plants and tank storage and management system.

We have established a strong business network globally and locally to serve our customers with all their necessities. Our ability to locate and deliver hard-to-find items makes us an asset for small, medium and large organizations around the market.

Sterling Multi Technologies Ltd. has also been in the international trading business with a great reputation since long. We are highly experienced to work with several Ministries of Government of Bangladesh (GOB) including External Resource Division (ERD), State Credit, Suppliers Credit etc. We also have experience to do 'Intermediary Work' between GOB and foreign investors.

We are currently working with our overseas principals for several projects of World Bank, ADB, GOB, UN Families, Donor Agencies on turn-key basis and others.



ASIAN DEVELOPMENT BANK



The World Bank

We have expertise and also have good relations with experts of various fields and we can employ them whenever necessary.

## A step ahead solution – with Sterling

Faced with continuous change in the market and industry demand and the accelerating pace of globalization, the factors guiding our success are above all flexibility, expertise and a keen sense of market trends. Depending on needs, we design innovative and tailor-made solutions for our customers. Our staffs have both the expertise and the drive to work successfully.

## **STERLING, the one-stop platform**

We not only take care of and handle the entire sales process, we also provide you with reliable, fast delivery in accordance with your every wish. You can also rely on us in the pre-sales area, where our staffs are ready to advise and assist.

We cover a relatively large market with our departments on Medical Equipment, Turn Key Solutions, Industrial Machinery and Spare Parts, Raw Materials, Laboratory Instruments, Forensic and Intelligence Solutions AFIS, ABIS, VSC etc.

## **Current Activities**

Current year we awarded numbers of contract from CMSD (Central Medical Stores Depot.) under Ministry of Health and Family Welfare for value US\$ 5.00 MN (approx) against supply of X-ray, ECG, Ultra sonogram, Autoclave, Sterilizer, OT and Orthopedic Table, Centrifuge, Cryogenic Storage Systems, Anesthesia Equipment, Bone Marrow Transplantation (BMT) Equipment, Mortuary and others. Majority of them financed by World Bank

We signed a contract for value US\$4.28 Million against construction of Modern Food Laboratory in Dhaka and Chittagong on Turn-Key Basis including installation of the equipment, training and service delivery for 2(Two) years under finance of A.D.B.

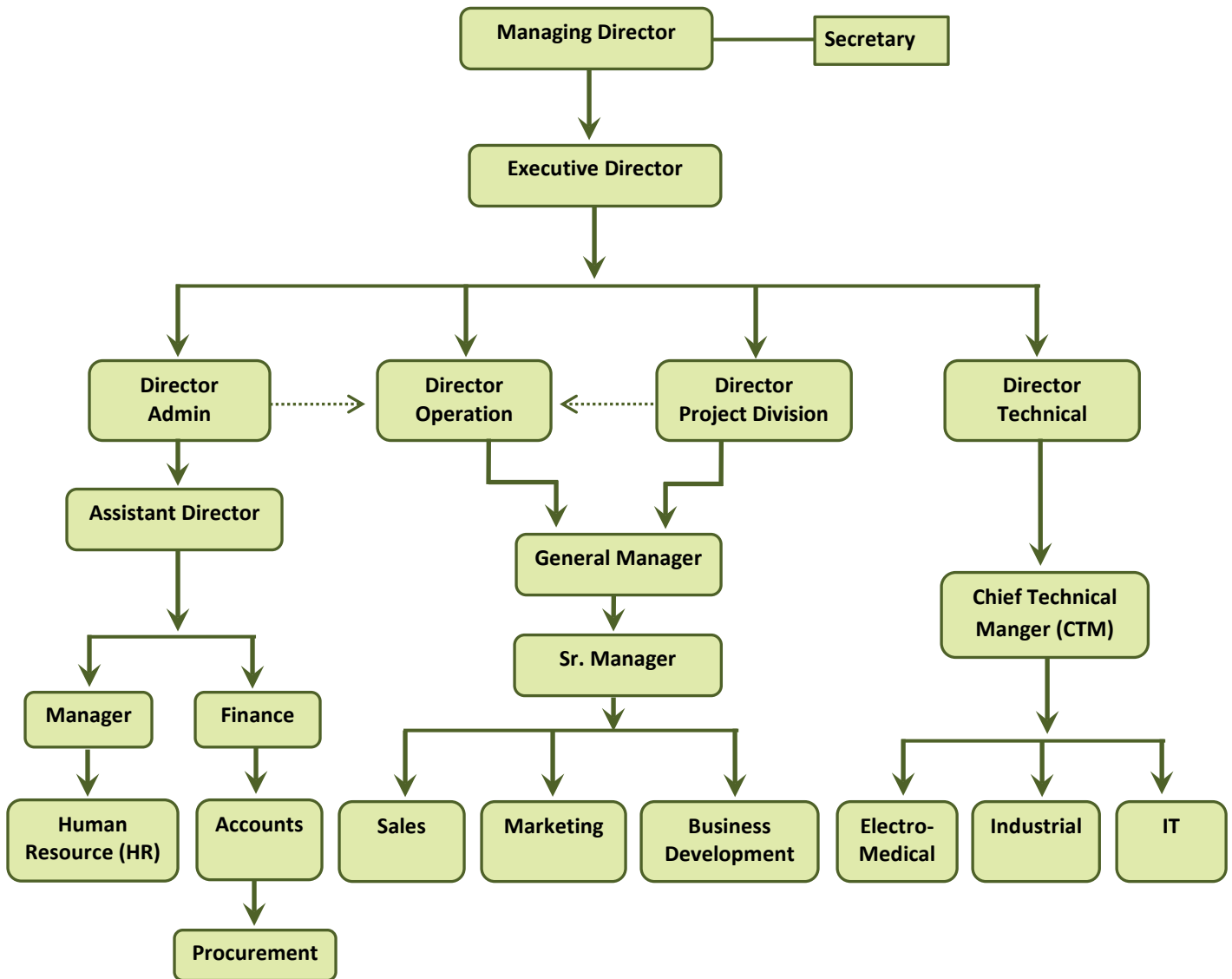
Besides we supplied on to the Law Enforcement Agencies (LEAs) various Intelligence and Security Products under thirty contracts for value received apprx.US\$6MN including Automated Fingerprint Identification System (AFIS), Automated Ballistic Identification System (ABIS), Cyber Crime Detection System, Cellular Phone Tracking System, Video Spectral Comparator (VSC) for Authentication of Security Documents, Hand Writing Identification System, Foot Print & Tire Mark Identification System, Crime Scene Vehicles, Large Comparison Microscopes, Forensic Equipment and Kit Boxes, etc.

Our currently turnover is US\$10(Ten) MN.

We supply under World Bank.ADB or Govt. tenders as

- Hospital/Medical Equipment
- Industrial Machinery
- Turn Key Installations
- Cyber Crime and Forensic Technology
- Infrastructure
- Teaching and training systems
- Hospital fittings and equipment
- Food technology
- Measurement systems
- Laboratory equipment, fittings and accessories
- Agricultural technology.

## Company Organogram



## Products Overview

We supply under World Bank or government tenders. These include:

- laboratory fittings and accessories
- teaching and training systems
- hospital fittings and equipment
- food technology
- measurement systems
- agricultural technology

Our staff have both the expertise and the drive to work successfully in these countries. Long-standing partners or staff members in the respective countries ensure flexible after-sales service.



Products Overview

## Our Products

### Medical Equipment

#### Autoclave

We are representing LTE Scientific- UK, BMT-Czech Republic



It offers superb operational flexibility and is easy to install in any laboratory, requiring only an electrical supply.



Autoclave

Capacities: 40, 60, 120 and 160 liters

Steam Generation Options: In-chamber heaters

Vessel Type: Cylindrical, front and top loading

Applications: Glassware, plastics, discard, unwrapped instruments, hollow-ware, high security cat 3



**MIM Group**

Touchclave System Sterilizers have been designed to suit a wide range of applications:

- Porous Load
- Laboratory
- High Security
- Pharmaceutical and cGMP
- Large Capacity (up to 10,000 liters)



Sterilizer



# STERLING



**Applications:** Glassware, plastics, discard, unwrapped instruments, wrapped instruments, clothing/fabrics, hollow-ware, clean steam, high security cat 3, 3+ and 4

## **Cryogenic Storage (Freezer)**



The  $-180^{\circ}\text{C}$  end temperature ensures sample integrity during transfer to storage at liquid nitrogen temperatures whilst the flexibility of the system, including protocol stage transition based on sample or chamber temperature or time, is ideal for the more demanding protocols associated with advanced cryo-preservation techniques.

## Medical Refrigerator

We are exclusive representative of **Sanyo** for Medical Refrigerator in Bangladesh and also representing **Planerand Vestfrost**. The products cover from Ultra Low Freezer (both upright and chest), Lab Freezers, Pharma Refrigerators (2-14°C) and Blood Bank



Blood Bank Refrigerator



Blood Bank Refrigerator



Ultra-low Freezer



Ultra-low Freezer

## Ultra sonogram



**Portable ultrasound system, with full digital technologies, it delivers high quality images and great diagnosis confidence.**

Full digital technologies, Tissue Specific Imaging (TSI), Tissue Harmonic Imaging (THI), Digital beam forming, Dynamic receiving aperture, Dynamic frequency scanning, dynamic receiving focusing, Real-time dynamic filtering

## Centrifuge

**Representing: Hettich Lab Technology, Germany**



Centrifuges make use of the centrifugal force that acts on mixtures during rotational movement to separate the constituents. A pre-requirement here is a sufficient difference in density between those constituents. Laboratory centrifuges are sedimentation centrifuges and may take the form of bench top or floor-standing models. They are used in many fields, such as chemistry, physics, pharmacy, biology, biotechnology and, not least, medicine. Their power is needed in industry for production purposes, in research facilities for scientific applications and in medical laboratories for investigation purposes or to derive blood constituents.



General Purpose Centrifuge



Refrigerated Centrifuge

## DNA Test Device

We are representing Anatolia Genework Inc, Turkey for DNA Test Device and supplied Real-Time PCR instrument which is well known that the accuracy of the thermal cycles and achieving temperature uniformity between tubes, so that all samples undergo the same thermal conditions, are prerequisite for a reliable PCR reaction.

Key to a precise and sensitive quantification analysis lies in the error-free detection and analysis of low levels of fluorescence.

In order to realize these fundamentals, Montania is equipped with substantial structural features to meet the requirements and expectations of both diagnostic and research fields.



Real time PCR test Device

**X-Ray:** We supplied X-Ray from IMD, one of the best manufacturers of X-ray components in China





Innomed Medical

## ECG Machine

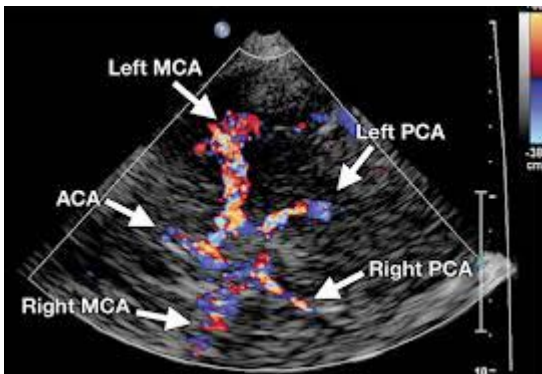
We offer full range of ECG devices, defibrillators, patient monitors of **Innomed Medical Developing and Manufacturing Inc. HUNGARY** is one of the few manufacturers of x-ray generators in the world, and is also capable of providing complete radiology solutions. Apart from our own developed products we have also shouldered the representation of some key medical products.



ECG Machine

## Transcranial Color Doppler

Have supplied Transcranial Color Doppler from Atys Medical



Color Doppler



## Incinerator



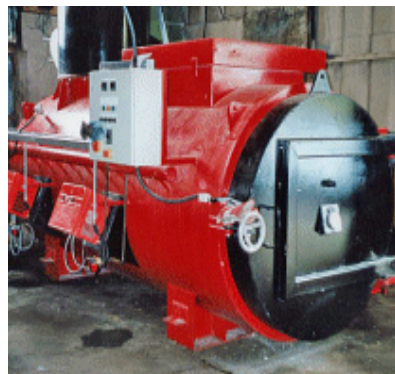
We are representing **Techtrol, UK** who is dedicated to excellence in manufacturing solid waste incineration systems used by the world's leading hospitals, universities and research companies as well as Government departments and private sector contractors.

**Techtrol manufacture incinerators suitable for all types of waste:**

- ✦ Clinical
- ✦ Animal
- ✦ General

### Clinical waste incinerators

Capacity (kg/hr)		Hours of
from	to	operation
25	100	8
150	500	8/16
100	500	8/16
100	1000	16
500	>1000	24



**Incinerator**

### General waste Incinerators

Capacity (kg/hr)		Hours of
from	to	operation
25	100	8
150	500	8/16
100	500	8/16
20	80	8

### Animal cremators

Capacity (kg/hr)		Hours of
from	to	operation
1	30	8
1	50	8
1	50	8
1	50	8
1	50	8
1	50	8
1	50	8
1	50	8
25	200	8
150	500	8
50	500	16
50	1,000	16

## Vaccine Carrier and Cold Box



We are representing Giostyle, Italy for Vaccine Carrier and Cold Box, They have 4 different sizes: from the smallest BRAVO 16 to the largest BRAVO 32, suitable for large families, through the intermediate models BRAVO 25 and 28.

## Palakkad Surgical Industries Pvt Ltd



Hospital Bed (i)



(ii)



Hospital Bed (iii)



(iv)

Medical Chair



Medical Instrument

- Anaesthesia & Intensive care
- Anesthesia & Resuscitation
- Anesthésie (petits consommables)
- Anesthesia & Reanimación



## Mortuary



**We are representing Hygeco, France** where Hygeco Lear offers you a wide range of Cold Chambers, refrigerated tables, stretchers and body trays lifters. Our specialists are happy to advise you, from the full layout of your Cold Chamber and its full installation, to mobile refrigeration units for use in vehicles



## Bio-Safety Level 3 (BSL-3)



BSL 3 has been supplied to Institute of Epidemiology, Disease Control and Research (IEDCR) a Communicable Disease Control unit, DGHS of Ministry of Health and Family Welfare, Government of the People's Republic of Bangladesh.





## Forensic & Intelligent Equipments and System

### Mobile Tracking System



We supplied Mobile Tracking System to enforcement agency of Bangladesh Government.



### Video Spectral Comparator (VSC) for Authentication of Security Documents from Foster and Freeman, UK.

foster + freeman



The Desktop video spectral comparator is a comprehensive digital imaging system providing the questioned document examiner with an extensive range of facilities for detecting irregularities on altered and counterfeit documents

## Crime Scene

For Crime Scene equipment, we are representing Sirchie, USA and we delivered Field Investigation Kits, Sexual Assaults Kits, and Crime Scene Vehicles to Bangladesh Police.



Sirchie is a comprehensive manufacturer and distributor of crime scene investigation and forensic evidence collection supplies. The Company's products are used by law enforcement agencies around the world to identify, collect, record, analyze, evaluate and archive physical evidence. Sirchie's expansive offering extends beyond fingerprint powders and brushes to include forensic light sources, evidence drying cabinets and forensic workstations, optical enhancement equipment, narcotic and blood alcohol test kits, sexual assault and DNA evidence collection kits, gunshot residue collection, personal protection equipment and proprietary law enforcement software.



## IT Forensic:



For Bangladesh Police, we supplied Encase Portable, Forensic Analysis Software from **Guidance**, Mobile Data Extractor from **Logicube** and Forensic Workstation from **mh Service**.



Forensic WorkStation



Encase Portable



Antalyzer



Encase Portable Forensic Deluxe



Mobile Data Extractor



e-Passport Reader (MRP/MRV reader),  
we are representing Panasonic

**Panasonic**  
ideas for life



With its high-precision OCR algorithm, this compact ePassport Reader is ideal for a wide range of applications

The compact body of this new ePassport Reader is packed with UV/IR imaging, barcode reader, and other functions. Applications include hotel guest management as well as quick and efficient immigration and pre-boarding checks.

## Large Comparison Microscopes

**projectina**<sup>®</sup>  
A DIVISION OF FORENSIC TECHNOLOGY

We have supplied Large Comparison Microscope to Bangladesh Police from Projectina.



High sophisticated optical system for forensic investigations with a unique program of accessories. The UCM impresses by its ease of operation, compact and solid design, ergonomic and user-friendly position of controls.



## AFIS - Automated Fingerprint Identification System

AFIS (Automated Fingerprint Identification System), ABIS (Automated Ballistic Identifications System), Hand Writing Identification System, Foot Print & Tyre Mark Identification System from Papillon Zao, Russia



The Integrated Automated Fingerprint Identification System, or IAFIS, is a national fingerprint and criminal history system that responds to requests 24 hours a day, 365 days a year to help our local, state, and federal partners—and our own investigators—solve and prevent crime and catch criminals and terrorists. IAFIS provides automated fingerprint search capabilities, latent search capability, electronic image storage, and electronic exchange of fingerprints and responses.



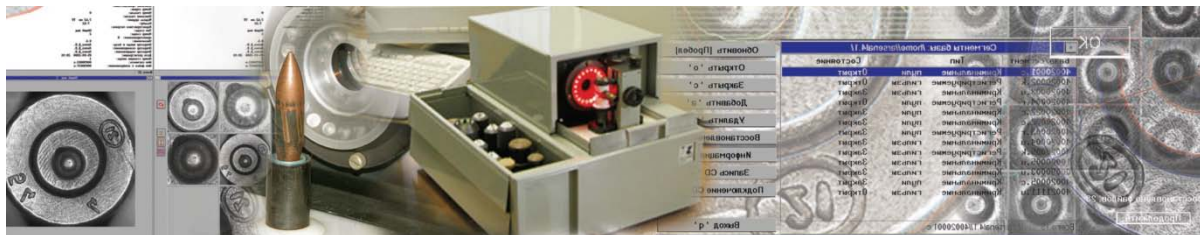
**What is included in AFIS:** Not only fingerprints, but corresponding criminal histories; mug shots; scars and tattoo photos; physical characteristics like height, weight, and hair and eye color; and aliases.

The international slandered AFIS that we provide to our client enables creating, storing and functioning of electronic databases of ten print and latent records, and automates the process of fingerprint and palm print identification helping to solve a wide range of vital tasks:

- Personal identification by fingerprints and palm prints, including real-time identification By a single print when performing in-the-field identity checks
- Identification of the unknown dead
- Ascertainment of implication in past crimes
- Consolidation of crimes committed by one and the same person
- Fundamentally, our system is based on the client-server architecture model enabling the workstations independently make service requests to the server that accepts and replies to these requests.



## ABIS - Automated Ballistic Identification System



### PAPILLON ARSENAL Automated Ballistic Identification System

#### Dedicated to Producing Results in a Short Time

The major task of the ARSENAL system is to use your ballistic files in the most efficient way in order to make a thorough examination and to obtain the most reliable results in a shortest possible time. It is obvious, that the core of the solution consists in automation and computerization of the identification operations, and this task cannot be solved without using state-of-the-art technologies. The ARSENAL system possesses all necessary tools for that. ARSENAL is a modern powerful computer system capable to automate the whole procedure of examination of bullets, cartridge cases and their fragments: from data entry and creation of electronic database, matching and split-screen verification to results of comparisons conducted.



#### ARSENAL ABIS is dedicated to

- Creating automated databases for rifled firearms booked in law-enforcement agencies
- Creating automated databases for bullets and cartridge cases captured at crime scenes
- Basing and filing the records of evolvents of bullets' leading surface and marks on cartridge cases
- Computerizing searches against databases
- Comparing bullets or cartridge cases side-by-side
- Automating the documenting of examination results
- Interregional data exchange

#### Functionality of ARSENAL ABIS

The ARSENAL ABIS automates the following tasks:

- Scanning entire bullet and cartridge case sides, cartridge case head, marks captured from shell fragments and deformed bullets
- Captures cartridge case head images using lighting in sectors. This method of scanning makes some characteristic marks (firing pin impressions, breechface marks, ejector marks) to look more legible than they are when being captured by ring lighting
- Automatically determining location of driven edge and leading edge impressions in an evolvent record
- Interactively locating unique impressions (striations) on a bullet and cartridge case side
- Automatically determining significant marks location on a cartridge case head with the possibility of human-aided correction



## Universal Testing Machine (UTM)



Universal Testing Machine (UTM)



Fatigue Testing Machine

We are representing Instron, USA for Universal Testing Machine (UTM) and Instron, UK for Fatigue Testing Machine for Life-Cycle Test who are leading manufacturer and dedicated service provider of material testing, instruments, systems, and accessories with comprehensive solutions for all your research, quality, and service-life testing requirements.



UTM 1000 hdx with Bluehill3



Bluehill3 Software





## High Temperature Chamber Furnaces/Single Zone Split Tube Furnaces

CARBOLITE is a world leading manufacturer of high temperature furnaces and ovens for laboratory, research & process applications. With more than 75 years' experience in thermal engineering we have developed a product range with a global reputation for performance, quality & reliability.

The construction of standard laboratory and industrial heat treatment equipment is only part of the picture for Carbolite.

Our customised solutions include products designed to meet the requirements of specific customer applications as well as adaptations of a standard model to make it a little larger or smaller or to reach a higher temperature.



Mini Tube Furnace



Heat Treatment with Vacuum or Gas Atmosphere





AMETEK is one of the world leading suppliers of analytical instruments, employing optical emission and X-ray fluorescence spectrometry technology, used for the elemental analysis of materials in industry, research and academia.

The SPECTROMAXx stationary metal analyzer is used mainly for material testing in foundries and for incoming and outgoing inspections in the metal industry around the world. It determines all of the elements used in the metal industry, including trace analysis of carbon, phosphorous, sulfur and nitrogen.

The third generation of the SPECTROMAXx features improved operation with the use of toolbar buttons, a user management system, and a separation of operation from programming of the instrument. The measurement is no longer controlled through the menu, but with symbols and toolbar buttons. Once a procedure has been started, only the functions that are logical at that point in time are active in the control software – all other commands are hidden. With the new application profiles, customer specific information can be set before beginning operation, relieving laboratory technicians of administrative activities.

The SPECTROMAXx independently monitors all operating parameters. It dynamically determines the measurement time required based on the given sample properties and even shows when the spark stand needs to be cleaned depending on the type of samples being examined.

The SPECTRO xSORT XRF handheld analyzer is designed for high-throughput elemental testing and spectrochemical analysis of a wide range of metals and other materials in the field. Its speed, accuracy and ease of use set new benchmarks for handheld spectrometric performance. The SPECTRO xSORT handheld analyzer is ideal for applications, including positive material identification (PMI) and environmental screening, recycling of alloys, precious metals, and aluminum, plus mining and compliance screening.



The Astec range of **ductless fume cupboards** utilises the latest filtration technology to offer you solutions for chemical hazard control, offering a variety of established products and new developments.

## Microflow

**Laminar flow workstation** is designed specifically for product protection.



The cabinet works on a recirculating principle. It is a self balancing unit, drawing its make up air through the front aperture; approximately 70% of the airflow within the working area is then recirculated via the main HEPA filter, with the remaining 30% being exhausted out via the exhaust HEPA filter.

This workstation offers:

- Product protection
- Safety parameters constantly monitored
- Operator friendly front screen
- Tested to BS EN ISO 14644-1 Class 5

The Class II-type airflow protects the product and the cabinet provides negative pressure at the working aperture. This unit is particularly suited to tissue culture work but is not suitable for use with pathogens.

The cabinet has a unique sliding/hinged door mechanism that provides uninterrupted access and a 100% seal for bio-decontamination so no closing panel is needed.

## Microflow advanced Biological Safety Cabinet



The Microflow advanced biological safety cabinet provides operator and product protection for work with up to category 3 pathogens.

This cabinet has been developed specifically to utilize hydrogen peroxide technology for bio-decontamination, offering a realistic alternative to formaldehyde fumigation. The cabinet operates in conjunction with the Bioquell L-2 hydrogen peroxide vapour generator to provide fast, ABS Class II efficient, validatable and safe gassing of the cabinet. Specifically configured for use with hydrogen peroxide, all construction materials have been selected for compatibility.

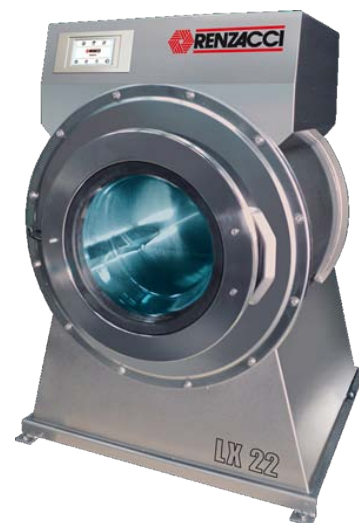
During bio-decontamination the cabinet operates at negative pressure eliminating leaks to the atmosphere, gas passes through all filters to ensure efficient removal of all contaminating particles. Shorter cycle times for bio-decontamination means minimal downtime in the laboratory and all units feature an anti-blowback valve allowing bio-decontamination to take place without closing the exhaust dampers.

## Washing Plant



These are just some of the key words that characterise and explain the great success and long tradition of Renzacci Spa in the industrial wet-cleaning washing machine sector.

We continually build upon and add to this success with new technologies and new lines for wet-cleaning laundry professionals. THE BEST THING ABOUT THESE MACHINES IS THAT THEY CAN BE EQUIPPED with features that meet user-specific demands BOTH IN TERMS OF TREATING GARMENTS THAT REQUIRE A HIGH LEVEL OF MECHANICAL WASHING OR in terms of carrying out more delicate cycles, ensuring the gentle rotating movements of the basket and extremely precise pauses, which are necessary for protecting these types of garments.



The very large variety of operating possibilities is made possible by the numerous technological features incorporated into Renzacci washing machines, including:

the new electronic ECOMPUTER® programmer, with limitless operating possibilities, which allows you to set an almost infinite range of programmes, sub-programmes, number of rotations, pauses, basket rotation directions and washing temperatures.

Soaking and misting systems.

ECOMIX® mixing and bath temperature monitoring system

The latest generation of electronic inverters to vary the rotation speed of the drum at will.

The convenient and extremely precise LITRE COUNTING SYSTEM



Washer Extractor



Ironer

## Artificial Insemination (AI) Lab



necessary accessories and consumables. For information regarding freezing extenders, please refer to the species section.

## Semen Freezer

Equipment and supplies for the cryopreservation of porcine, equine, canine, ovine and caprine semen.

Semen of nearly all species can be successfully frozen in semen straws for extended storage and preservation. Minitube offers a complete line of products including semen straws, automatic, semi-automatic and manual straw filling and sealing machines, straw printers, cooling cabinets, semen freezers, liquid nitrogen storage containers and all

## Microscope with Heater

Customize your laboratory by combining one of our many microscopes and heating system solutions.

Minitube provides standard and custom solutions for assisted reproduction, research, cellular and molecular biology and more. By working with industry leaders in microscope production as well as by offering our own top of the line heated stages and warming plates, Minitube offers quality solutions known for being accurate and user friendly. Minitube heating systems effectively maintain a high level of accuracy and even temperature distribution.



## Icelined Refrigerators

Refrigerators operate with temperatures from +2°C to +8°C for safe and proper storage of vaccines. The series of reliable units are made for extreme conditions and tested to perform in climates with ambient temperatures up to 43°C





## Robotics and AI lab Software

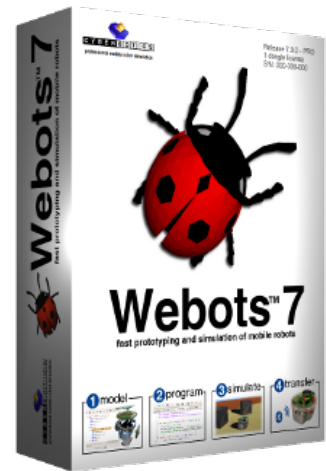


ePuck Robot

An open hardware robotics platform for education at university level.

### Webots Software

The Webots robot simulator is used in more than 1095 universities and research centers worldwide.



### Mobile Robot – 5DOF

Educational Robot Mobile Manipulator is versatile and has been made for the inventors of the future: The Robot is a powerful, educational robot that has been especially designed for research and education in mobile manipulation, which counts as a key technology for professional service robotics. It consists of an omni-directional platform, a five degree-of-freedom robot arm and a two-finger gripper.



This Robotics system is an open platform that is operated with open source software. It is on its way to become a reference platform for hardware and software development in mobile manipulation.

## Industrial CNC controller

PC based design - Industrial CNC control PCB allows for programming while machining.  
Standard canned cycles are intuitive yet powerful, makes programming a breeze.  
Start point return, reference point return, trace function, and Retrace function allows for quick, easy setups and resetting after a wire break.  
Easy data input via control panel  
Receives CAD/CAM data easily with 3.5" inch floppy disc, NET, and RS-232C port all available.



Wire Cut EDM

JSEDM is globally recognized for EDM manufacturing expertise. We are based in Taiwan and have been producing high performance EDM

**NCF Series:** Z Axis Programmable NC EDM with Monitor Display, Up To 500 Steps Program Setting Can Save/Load/Delete Working Experience.

**EB-N Series:** Z Axis Programmable NC EDM with Color Monitor Display, AI & Fuzzy Control.

**CNC-L Series:** Fully CNC Control EDM with 17 Orbit Cutting Movements, Up to 256 Set Preset Working Parameters for Easy Operation.

**CNC-E Series:** CNC-EB60E/60A, Simple CNC Control EDM with Multi-Cavity and Side Spark Function, Less Expensive than CNC-L EDM.

**WEDM Series:** Fully CNC Wire Cut EDM with 5 Axes Motor Control Max. Cutting Speed: 180mm<sup>2</sup>/min, Max. Taper Cutting: +15°

**Drilling EDM:** Digital Display and Operational Controls with 10 Separate Memory Sets, Pipe Diameter Range From 0.2mm to 3.0mm, The Ratio of Machining Depth to hole Reaches 200:1.

## Major Projects (Turn-Key)



Sterling has successfully completed **Khulna Essential Latex Plant (KELP)** to produce quality Latex Male Condoms for the domestic and export market. The factory and office complex is located at Gilatala, Khulna, Bangladesh. The factory complex consists of the manufacturing plant stores, labs and an administrative wing.

Production Facilities:

Competency of Process Equipment: Country of Origin is Germany



Dipping Line Latex



Dipping Line Hand Gloves



Control Section

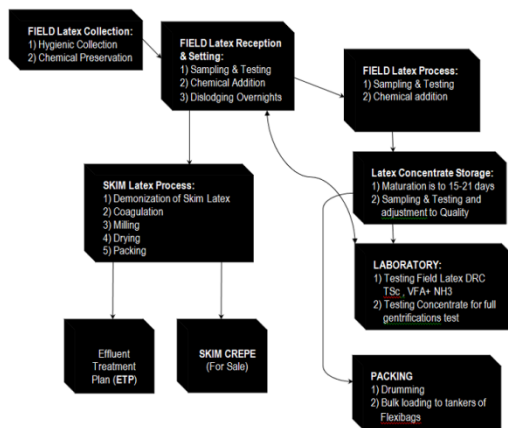




## Latex Plant at Modhupur

Sterling has successfully completed **Latex Processing Plant** at Modhupur in Tangail with using natural latex from domestic rubber source. The project value is Tk. 127 which would be used as domestic raw materials in the production of condoms & surgical hand gloves in Khulna Essential Latex Plant (KELP). The by-products would be used in manufacturing low-grade rubber products such as tubes for automobiles, footwear etc.

**Flow Chart for manufacturing 60% concentrate prevulcanized Latex in ELPP**



Latex Processing Factory



Rubber Tree



Ball Mill (Chemical Preparation)



Latex Centrifuge Machine



Latex Reception Tank



## Radar Tank Gauging System



Awarded contract for supply of Radar Tank Gauging System by Motherwell Tank Gauging UK, by the country's largest stakeholder in refining Eastern Refinery Ltd., (ERL)



Motherwell Tank Gauging Systems offer a one stop solution to your tank level gauging requirements.

- Radar Tank Level Gauge
- Servo Tank Level Gauge
- Mechanical Float-operated Level Gauge
- Temperature Measurement
- Water Interface
- Density Measurement
- Tank Gauging System
- SIL-certified Tank Overfill Prevention Systems
- Overfill Alarm Switches
- Alarm Systems
- Automated Tank Overfill Prevention Response

## **Food Lab (Running Project) both in Dhaka and Chittagong City Corporation.**



Contract Signing Ceremony

Sterling Multi Technologies Limited has signed contract with Dhaka City Corporation for setup a modern food lab both in Dhaka and Chittagong City Corporation. The Contract has signed on 9th September, 2013.



Modern Food Laboratory, Dhaka



Modern Food Laboratory, Chittagong

## Water Treatment Plant:



Sterling Provide Water Treatment Plant in National Institute of Neuroscience (NINS), Dhaka and Eastern Refinery in Chittagong and representing Aquatech, Italy.

## Power Sector



## SOUNDPROOF DIESEL GENERATING SETS

### Build it better with Denyo

Denyo signifies outstanding performance in over 130 countries. Output range from 1.3kVA to 1100kVA. Large capacities are possible with multiple generator / synchronizer systems.



## Ambulance



**Air Ambulance**

This Air Ambulance is an Italian twin-engine turboprop aircraft produced by Piaggio Aero. It seats up to nine passengers in a pressurized cabin, and may be flown by one or two pilots. The design uses a small forward wing and a main wing combination that places the wing spars outside of the passenger cabin area. Although the front wing resembles a canard configuration, a conventional horizontal stabilizer on the tail provides longitudinal stability and pitch trim.

The turboprop engines of the aircraft are placed on a mid-fuselage, high aspect ratio wing, located behind the cabin. The design utilizes both a T-tail and a pair of small, fixed anhedral forward wings that have flaps. The flaps on the Avanti II's small forward wing automatically deploy in concert with main wing flaps. The arrangement allows the horizontal stabilizer to maintain relatively neutral lift, when the flaps are deployed, by eliminating the downward force that the horizontal stabilizer would otherwise have to produce to compensate for the pitch-down moment created by the deployment of the main wing flaps. This in turn allows the size of both the horizontal stabilizer and the main wing be reduced for efficiency.

The forward wing angle of incidence relative to the fuselage is set so it stalls before the main wing, producing an automatic nose-down effect prior to the onset of main wing stall; its five-degree anhedral (negative dihedral) keeps the stream wash interference clear of the engine inlets, the main wing and the horizontal stabilizer.



Cabin cross-section varies continuously along the length of the aircraft; the shape approximates a NACA airfoil section, and the slowly changing curve helps prolong laminar flow on the front of the fuselage. Piaggio claims the fuselage contributes up to 20% of the Avanti's total lift with the front and rear wing providing the remaining 80%. Due to the unusual fuselage shape, the mid cabin is considerably wider than the cockpit.



## Ambulance

The Mercedes Benz Sprinters are equipped with full automatic transmissions and demountable UV Modular box bodies. In a break with an 80-year tradition, they are painted in high-visibility yellow rather than white.

Chief Ambulance Officer Peter Bradley declares: "These new state-of-the-art ambulances not only look very different, they are also a real step forward for us in terms of their design. Their introduction can only help to further improve the quality of care we provide to our patients as we continue to modernise our service."

The new Sprinter fleet will enable emergency medical technicians and paramedics to improve the standard of care given to seriously ill or injured patients. Features include a more spacious working area designed to carry the latest medical equipment, tail-lifts to help ambulance staff moving patients in and out of the vehicle, and a new design of hydraulically-operated stretcher-trolley.

The Sprinter's suspension also offers greater shock absorption than that of previous vehicles, an attribute that will benefit patients with spinal injuries, while time-saving satellite-navigation systems and mobile-data terminals will be fitted over the coming months.

Ambulance chiefs are now looking forward to making long-term savings because the Sprinters' powerful 2.7-litre diesel engines consume up to 50 per cent less fuel than their petrol-driven predecessors. And although the chassis are expected to give six years' service, their modular bodies should last double that time and can be re-fitted to new chassis cabs.



"The feedback we received on the Sprinter was very positive indeed, while Mercedes Benz played their part too by listening carefully to our requirements and responding in the right way. I have no doubt that the Sprinter will prove to be ideally suited to the job."



## Laboratory Filtration

We offer a complete range of laboratory filtration products, from filter papers and membranes to syringe filters, capsules, microplates, and filter vials. Whatman filters are world-renowned as a standard for laboratory filtration and are associated with quality, reliability, and reproducibility. Products such as our ready-to-use glass fiber filters, for determination of suspended solids in water, or our Mini-UniPrep G2 filter vial, for preparing multiple HPLC/UHPLC samples simultaneously, help you obtain higher quality results in less time.

Filtration is one of the most common techniques used in the laboratory to purify or concentrate samples. It can be used for many applications such as sample clarification before analysis, mobile phase filtration, membrane-based microbiology, sample sterilization, or particle sampling before analysis. Our Whatman filters are used in a wide range of areas such as quality testing in the pharmaceutical industry and in the food and beverage industry, but also in research and in environmental monitoring.



### Filter Papers and Membrane Filters

Broad range of filter media and retention/flow rate combinations for general laboratory filtration purposes



### Syringe Filters and Syringeless Filters

Explore our options for analytical sample filtration



### Capsule Filters

Pleated membrane or depth filter media in compact capsule housings for filtration



### Filtration Microplates and Accessories

Filtration and collection microplates for use in genomics, sample preparation, and filtration-based assays



### Other Filtration Devices

Vacuum protection filters, venting filters, and in-line filters



### Microbiology Filtration

Filtration systems and membranes for microbiological testing in the food & beverage, pharmaceutical, and water testing industries

# STERLING

UNDP - United Nations Development Programme



UNFPA - United Nations Population Fund



UNICEF - United Nations Children's Fund



UNEP - United Nations Environment Programme



ILO - International Labour Organization



Bangladesh Police



CID- Criminal Investigation Department



RAB- Rapid Action Battalion



DGDP- Directorate General of Defence Purchase



BOF - Bangladesh Ordnance Factory



CAAB - Civil Aviation Authority, Bangladesh



EDCL - Essential Drugs Company Limited



DCC- Dhaka City Corporation



Educational Institutes





## Representations

We represent a number of Japanese, European, USA & other well established manufacturers/suppliers;

### From UK

- ✚ Datong Plc
- ✚ Instron-Satec USA/UK
- ✚ Fortress GB
- ✚ Foster+Freeman
- ✚ AJ Cope & Sons
- ✚ Carbolite Furnaces
- ✚ Motherwell Tank Gauging
- ✚ MSE

### From Ireland

- ✚ CPI

### From USA

- ✚ PASCO
- ✚ Instron-Satec USA/UK
- ✚ Sirchie Fingerprint Laboratories Inc,

### From Germany

- ✚ Gabo
- ✚ F. Undutsch GmbH
- ✚ Minitube
- ✚ mh-Service GmbH



# STERLING

## From Russia

- ✚ PAPILLON ZAO.
- ✚ Uranis

## From France

- ✚ Hygecos.a.
- ✚ Atys Medical World
- ✚ Ercom

## From Netherlands

- ✚ DBR Generator sets
- ✚ M.M.C. International B.V.

## From Japan

- ✚ Panasonic Bio-Medical
- ✚ Tokyo Sokki

## From Malaysia and Singapore

- ✚ Synthomer
- ✚ Whatman Asia Pacific Ltd.
- ✚ Hyres Chemicals
- ✚ SciMed (Asia) Pte Ltd,
- ✚ Panasonic Systems Asia Pacific
- ✚ Strategic Product SdnBhd,
- ✚ Richter Rubber Technology Sdn. Bhd.

## From China

- ✚ Ningbo David Medical Device Co., Ltd.
- ✚ Shandong Xinhua Medical Equipment Co., Ltd.
- ✚ Zhangjiagang Hualing Medical Equipment Manufacturing Co., Ltd.

## Service Department

Sterling has been maintaining a well equipped service department with number of experienced engineers and technical hands.



Installation of Universal Testing Machine (UTM) at Military Institute of Science and Technology (MIST)

## Training



Training on Shardah, Rajshahi about Fake note Identification with Video Spectral Comparator (VSC6000)

Training Lab in Singapore



## On Time Shipment



Sterling takes care on time shipment delivery of Cargo and ensure you are in our experienced and professionals hand.

Whatever the size – from the smallest parcel to container



Office: Sterling Multi-technologies Limited



Office and Service Center: House 32, Road 7, Sector 3, Uttara, Dhaka-1230





## Company Information

### Sterling Multi Technologies Limited

#### Corporate Office

House 31 Road 4 Sector 3  
Uttara, Dhaka-1230  
Bangladesh.  
Tel: 880-2-8920512 /3, 8916619  
Fax: 880-2-8913556  
sterling@sterlingmultitech.com  
www.sterlingmultitech.com

#### Registered Office

23, Purana Paltan Lane (2nd Floor)  
Dhaka-1000,  
Bangladesh

#### Office and Service Center

House 32, Road 7, Sector 3  
Uttara, Dhaka-1230,  
Bangladesh

#### Bank

##### AB Bank Ltd.

Principal Branch  
30-31, Dilkusha C/A, Dhaka-1000  
Bangladesh.

##### Trust Bank Ltd.

Uttara Corporate Branch  
Uttara, Dhaka-1230.  
Bangladesh

